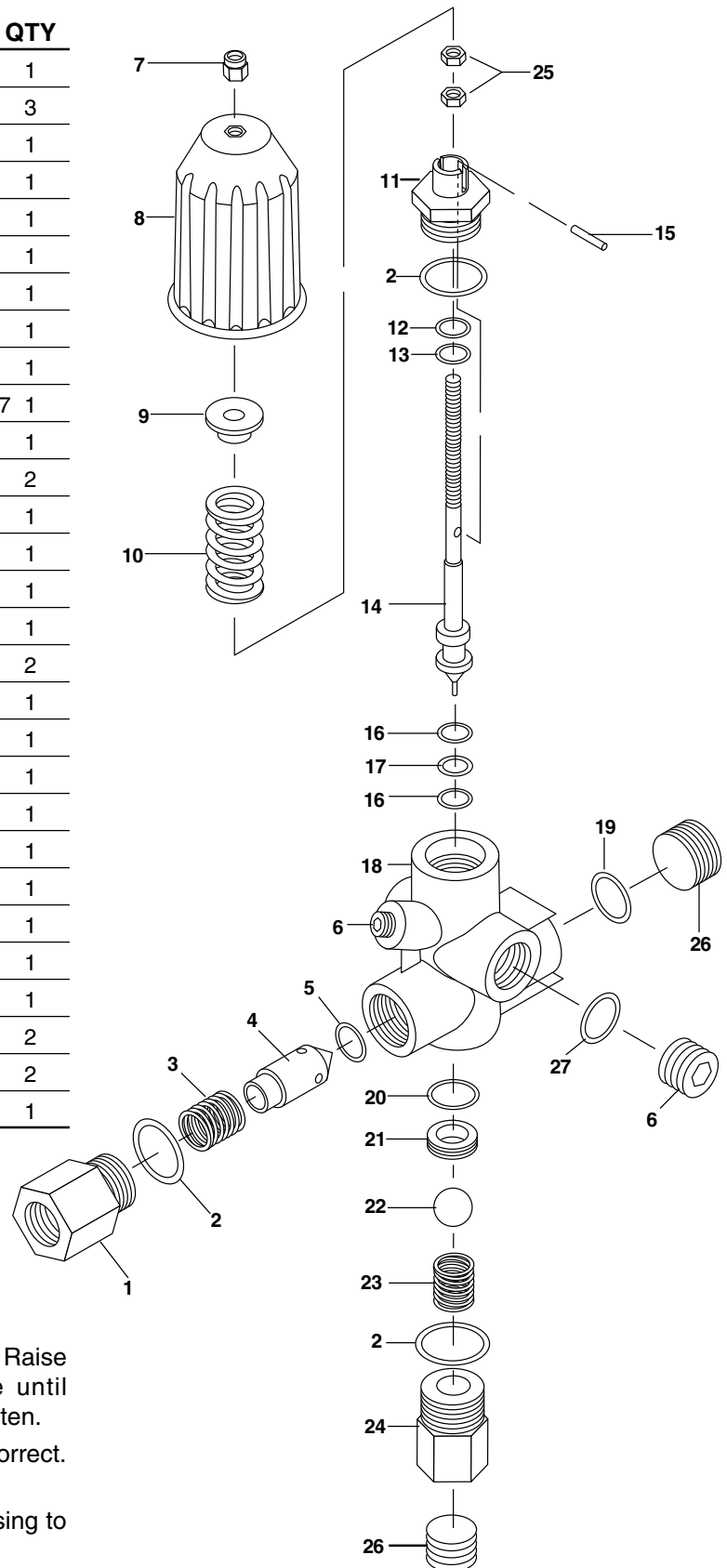


## AR - AL 607 #5-3208

7-8 Gpm, 4200 Psi

ITEM	PART NO.	DESCRIPTION	QTY
1	83-005150010	Check Connector	1
2	83-005060108	‡ O-Ring 2068	3
3	83-005100002	Shutter Spring	1
4	83-004120000	Shutter	1
5	83-004060109	‡ O-Ring 631290 SH	1
6	83-005170102	1/4 G Plug	1
7	83-005030101	M8 Lock Nut	1
8	83-005100100	Knob	1
9	83-005150101	Washer	1
10	83-005400403	4000 PSI Spring (Black) AL607	1
11	83-005150011	Stem Guide Union	1
12	83-005000102	‡ Back Ring	2
13	83-005060106	‡ O-Ring 2031	1
14	83-005160502	Stem AL606	1
14	83-005160514	Stem AL607	1
15	83-005106301	Spring Pin	1
16	83-005000101	Back Ring	2
17	83-005060101	‡ O-Ring 2050	1
18	83-005020003	Body By Pass 1/4 G-F	1
18	83-005020026	Body By Pass 3/8 G-F	1
19	83-005060200	3/8 Gasket	1
20	83-001060129	‡ O-Ring 2043	1
21	83-001060200	‡ Seat	1
22	83-001160000	‡ Ball	1
23	83-005100003	Ball Spring	1
24	83-005150009	Seat Union	1
25	83-005030200	M8 Nut	2
26	83-005170101	3/8G Plug	2
27	83-005060201	Gasket	1
<b>83-005650200</b>		<b>‡ Repair Kit</b>	



### ADJUSTING

Start with the valve set at its lowest spring tension. Raise pressure by turning adjusting knob clockwise until pressure is at the desired position. Do not overtighten.

Open and close spray gun to be sure pressure is correct. Raise or lower pressure by adjusting the knob.

Do not by-pass more than 5 minutes when by-passing to the suction side of the pump.