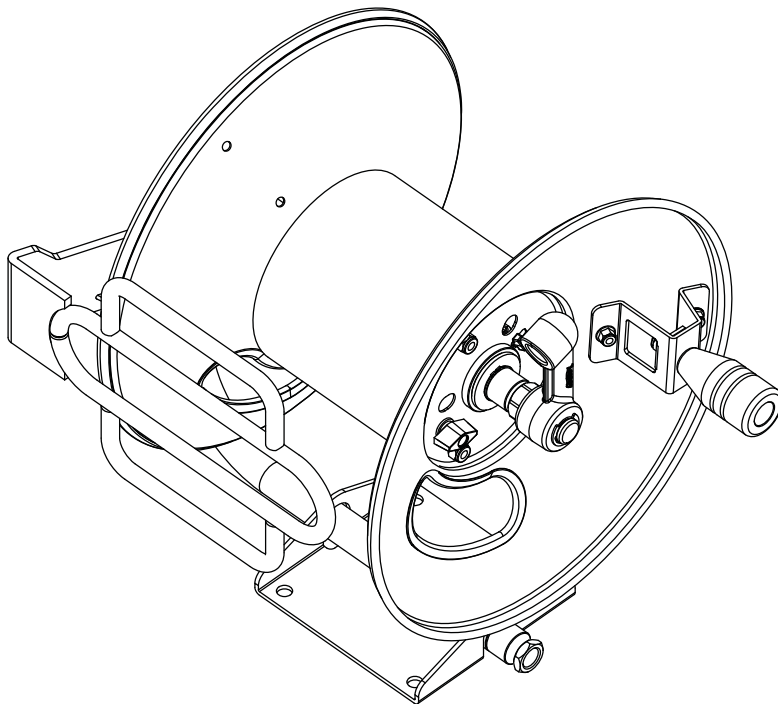


Legacy

OPERATOR'S MANUAL



<u>MODEL</u>	<u>ORDER #</u>	<u>DESCRIPTION</u>
HRF 100" X 3/8"	9.122-002.0	HOSE REEL 100FT FIXED BASE
HRF 200" X 3/8"	9.122-003.0	HOSE REEL 200FT FIXED BASE

To locate your local Legacy Commercial Pressure Hose Reel Dealer nearest you,
visit: www.Spraymart.com

8.780-002.0

CONTENTS

Introduction & Important Safety Instructions	3
Component Identification	4
Installation Instructions	5
Exploded view -002.0, -003.0 & Parts List	6
Reel assembly exploded -002, -003 & Parts List	7
Extended swivel assembly exploded & Parts List	8

Model Number _____

Date of Purchase _____

For warranty details visit: www.Spraymart.com

The model will be found on a decal attached to the hose reel box.
You should record both model and date of purchase and keep in
a safe place for future reference.

INTRODUCTION & IMPORTANT SAFETY INFORMATION

Thank you for purchasing this hose reel.

We reserve the right to make changes at any time without incurring any obligation.

Owner/User Responsibility:

The owner and/or user must have an understanding of the manufacturer's operating instructions and warnings before using this hose reel. Warning information should be emphasized and understood. If the operator is not fluent in English, the manufacturer's instructions and warnings shall be read to and discussed with the operator in the operator's native language by the purchaser/owner, making sure that the operator comprehends its contents.

Owner and/or user must study and maintain for future reference the manufacturers' instructions.

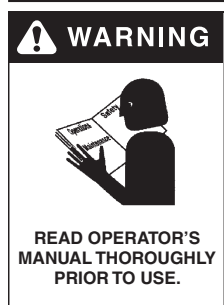
The operator must know that if reel stops unwinding or rewinding while using, washer machine system must be turned off immediately and understand the operation. Never pull strongly on the hose. Never permit anyone to operate the hose reel or pressure washer without proper instructions.

This manual should be considered a permanent part of this product and should remain with it if product is resold.

When ordering parts, please specify model. Use only identical replacement parts.

This product is to be used only by trained operators.

IMPORTANT SAFETY INFORMATION



WARNING: To reduce the risk of injury, read operating instructions carefully before using.

1. Read the owner's manual thoroughly. Failure to follow instructions could cause malfunction of the machine and result in death, serious bodily injury and/or property damage.

2. Stay alert — watch what you are doing.



WARNING: Keep wand, hose, and water spray away from electric wiring or fatal electric shock may result.

3. Reel, hose and equipment being used must be properly grounded. An ohmmeter must be used to check ground continuity.



WARNING: High pressure spray can cause paint chips or other particles to become airborne and fly at high speeds. To avoid personal injury, eye, hand and foot safety devices must be worn.

4. Eye, hand, and foot protection must be worn when using this equipment.
5. Keep operating area clear of all persons.
6. To reduce the risk of injury, close supervision is necessary when this product is used near children. Do not allow children to operate this product. **This product must be attended during operation.**
7. Never make adjustments on hose reel while in operation.
8. **Make sure that pressure does not exceed 5000 PSI maximum working pressure rated for the reel, bleed connecting reel to supply line.**
9. Before connecting input and output hoses, make sure that reel is installed properly.
10. If hose or reel are leaking, be certain all quick coupler fittings are secured. Inspect for leaking before using pressure washer.
11. Inlet water must be clean fresh water and **not exceed 325°F temperature.**
12. Manufacturer will not be liable for any changes made to our standard machines or any components not purchased from us.
13. The best insurance against an accident is precaution and knowledge of the equipment.

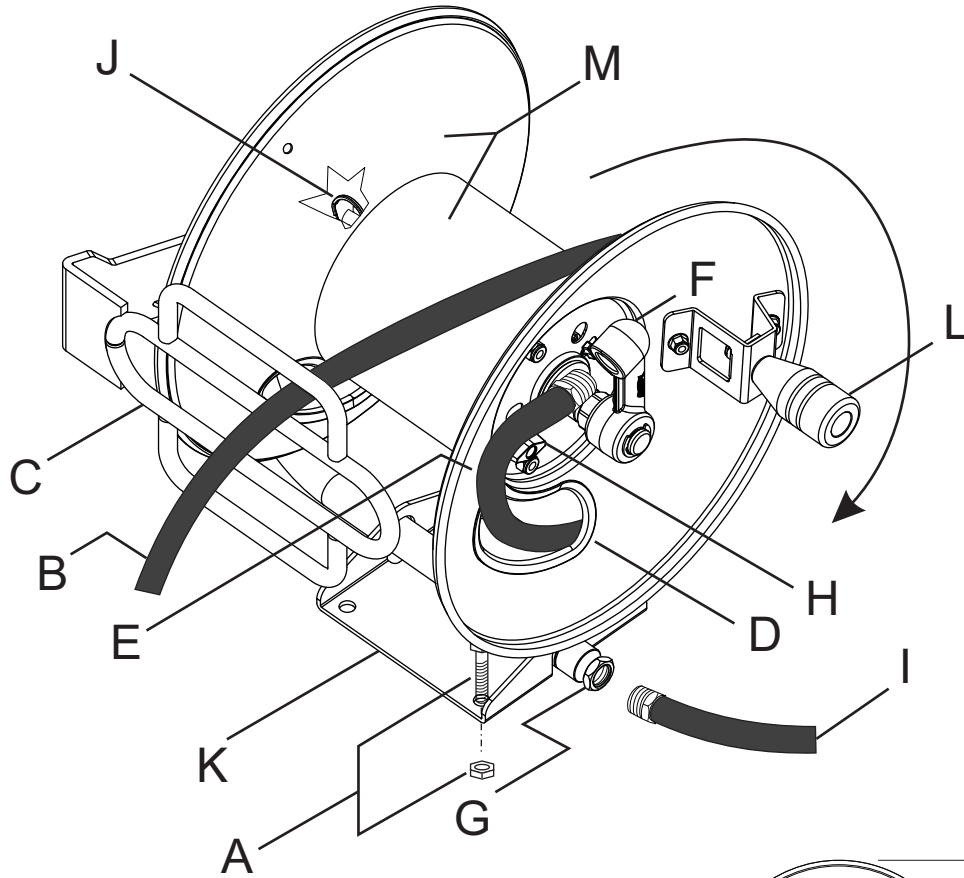


WARNING: Be extremely careful when using a ladder, scaffolding or any other relatively unstable location. The cleaning area should have adequate slopes and drainage to reduce the possibility of a fall due to slippery surfaces.

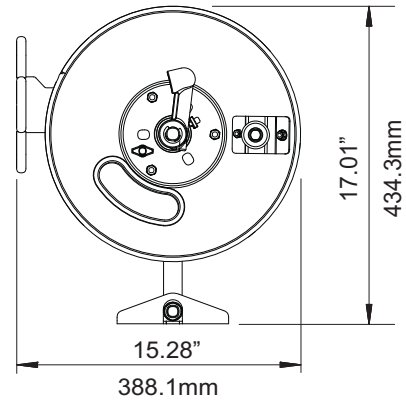
14. Do not allow acids, caustic or abrasive fluids to pass through the hose.
15. Never leave spray gun closed longer than 1-2 minutes, this might damage the hose.
16. Protect discharge hose from vehicle traffic and sharp objects. Inspect condition of high pressure hose before using or bodily injury may result.
17. Do not operate this product when fatigued or under the influence of alcohol, prescription medications, or drugs.

Follow the maintenance instructions specified in the manual.

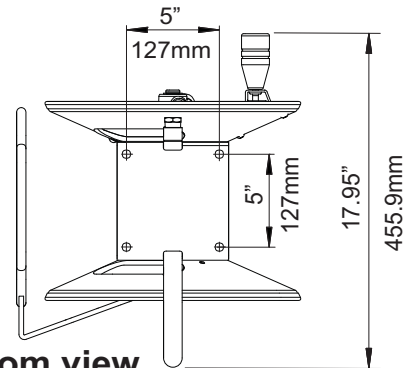
COMPONENT IDENTIFICATION



- A. Screws and nuts
- B. Output hose
- C. Hose guide
- D. Pass hole
- E. Clamp
- F. Swivel
- G. Bushing reductor
- H. Tension knob
- I. Water supply hose
- J. Lock pin for reel
- K. Fixed base
- L. Handle
- M. Reel

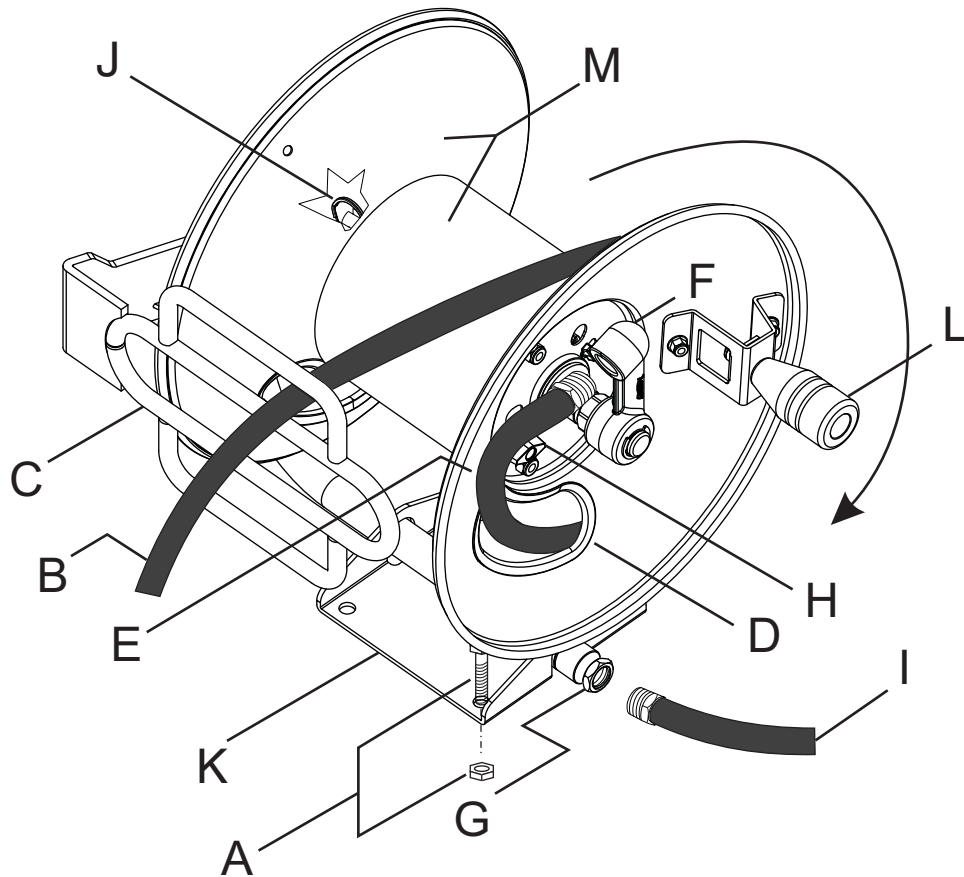


Front view



Bottom view

INSTALLATION INSTRUCTIONS



INSTALLATION INSTRUCTION MOUNTING

1. Check reel for shipping damage. Check operation turning reel by hand. Verify hose reel comes complete.
2. Mount base (K) on a proper surface to be fixed using four screws and nuts (A).

CONNECTING HOSES

WARNING: Before operation make sure that pressure system does not exceed maximum working pressure rating of reel.

NOTE: Pipe thread sealant is required to be applied on all threads.

1. Connect water supply hose (I) to Bushing reductor (G).
2. Route output hose (B) through hose guide (C), pass hole (D) and clamp (E).
3. Thread output hose (B) to swivel (F) Tighten securely.

4. Tighten clamp (E).

5. Extend hose and rewind onto reel (M) turning the handle (L) with the lock pin (J) unlocked, lock reel (M) when not used.

ADJUSTMENTS REEL TENSION

Adjust reel tension by tightening or loosening plastic knob (H).

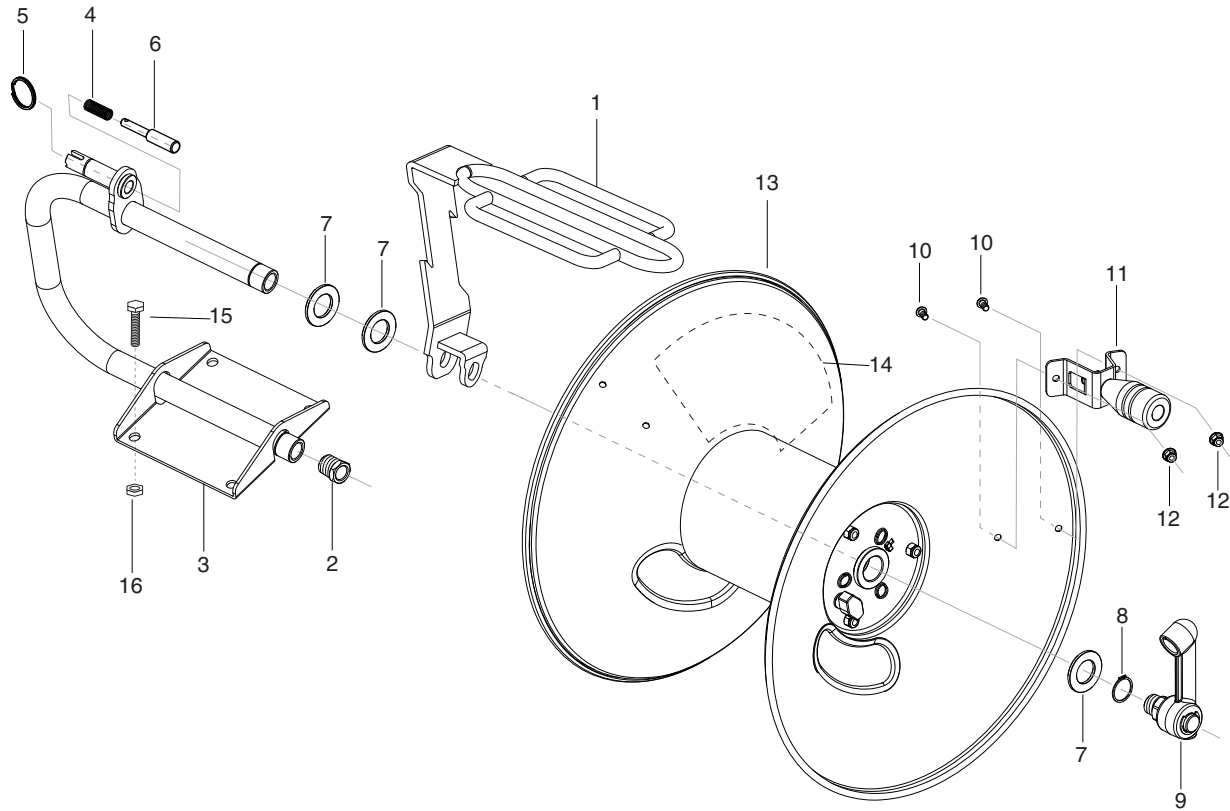
SERVICE INSTRUCTIONS

For hose reel maintainment and to prevent personal injury and/or equipment damage and avoiding the warranty, please refer only to an authorized service distributor.

REPLACING HOSES

1. To replace hoses follow procedures given under "Connecting Hoses".

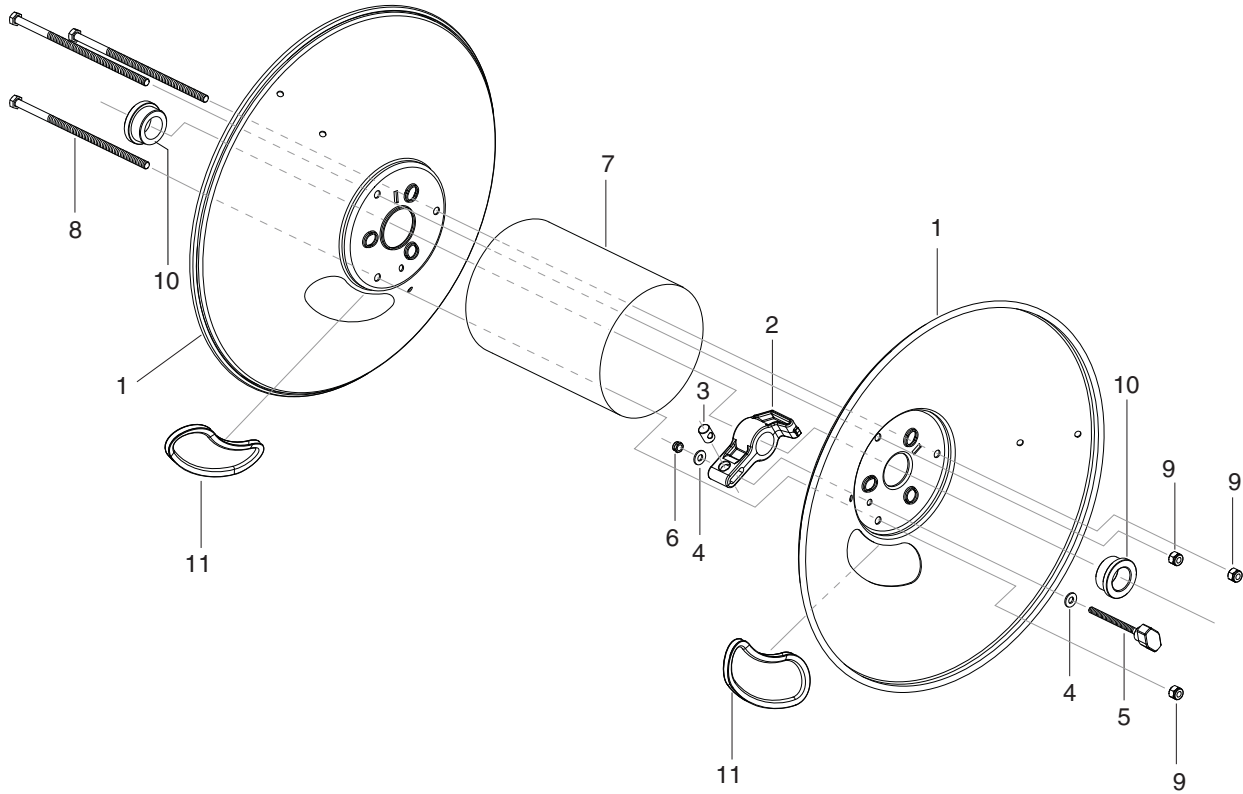
EXPLODED VIEWS -002.0, 003.0 MODELS



EXPLODED VIEW. PARTS LIST

ITEM	PART NO.	DESCRIPTION	KIT	QTY
1	9.116-010.0	Hose guide 100 ft (002.0)		1
	9.116-016.0	Hose guide 200 ft (003.0)		1
2	8.706-294.0	Bushing reductor 1/2"- 3/8" NPT steel		1
3	9.116-009.0	Fixed base 100 ft (002.0)		1
	9.116-015.0	Fixed base 200 ft (003.0)		1
4		Spring	A	1
5		Ring	A	1
6		Pin	A	1
7	9.198-017.0	Flat washer 1.0 ID X 1.75 OD		3
8	9.182-005.0	Retaining ring 1.0 shaft		1
9	9.118-020.0	Extended swivel assembly, (see page 9)		1
10	9.196-059.0	Button head screw, SS 1/4"-20x1/2"		2
11	9.121-043.0	Handle assembly		1
12	9.197-010.0	Nylock flange nut 1/4"-20		2
13	9.117-007.0	Reel assembly 100 ft (002.0), (see page 8)		1
	9.117-008.0	Reel assembly 200 ft (003.0), (see page 8)		1
14	9.138-435.0	Legacy branding label		1
15	8.718-772.0	Screw, 5/16"x 1-1/2" WHIZ		4
16	9.802-778.0	Nut, WHIZ loc 5/16" flange		4
	9.139-374.0	Kit A - Lock pin Spare Part Kit HR		

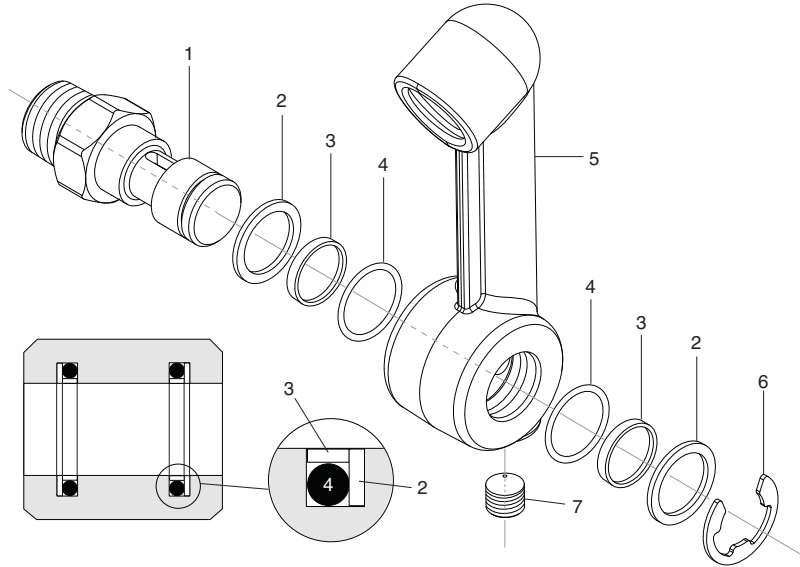
REEL ASSEMBLY EXPLODED -002.0, 003.0 MODELS



EXPLODED VIEW. PARTS LIST

ITEM	PART NO.	DESCRIPTION	QTY
1	9.116-013.0	Plate 100 ft (002.0)	2
	9.116-019.0	Plate 200 ft (003.0)	2
2	9.134-139.0	Plastic tension adjuster	1
3	9.152-021.0	Threaded barrel	1
4	9.802-802.0	Washer flat 1/4"	2
5	9.134-140.0	Tension adjuster knob	1
6	9.197-010.0	Nylock flange lock 1/4" - 20	1
7	9.116-011.0	Drum 100 ft (002.0)	1
	9.116-017.0	Drum 200 ft (003.0)	1
8	9.196-056.0	Screw 5/16" x 6.0", hex head, niquel plated (002.0)	3
	9.196-060.0	Screw 5/16" x 8.0", hex head, niquel plated (003.0)	3
9	9.197-002.0	Nylock nut 5/16"	3
10	9.134-141.0	Plastic bushing 1.0 ID	2
11	8.706-577.0	Trim, edge guard, black	2

EXTENDED SWIVEL ASSEMBLY EXPLODED



EXPLODED VIEW PARTS LIST

ITEM	PART NO.	DESCRIPTION	KIT	QTY
1		Swivel shaft male 1/2" NPT	C	1
2		PTFE SEAL	B,C	2
3		Backup O'Ring	B,C	2
4		O'Ring A-019	B,C	2
5		Extended swivel machined	C	1
6		"E" Clip retaining ring.	B,C	1
7		Plug 1/8" countersunk	C	1
	8.776-001.0	Kit B - SWIVEL REPAIR KIT		
	8.776-010.0	Kit C - SWIVEL COMPLETE REPLACEMENT KIT		

Legacy

Form #8.780-002.0 • Revised 04/10 • Printed in Mexico or U.S.A.