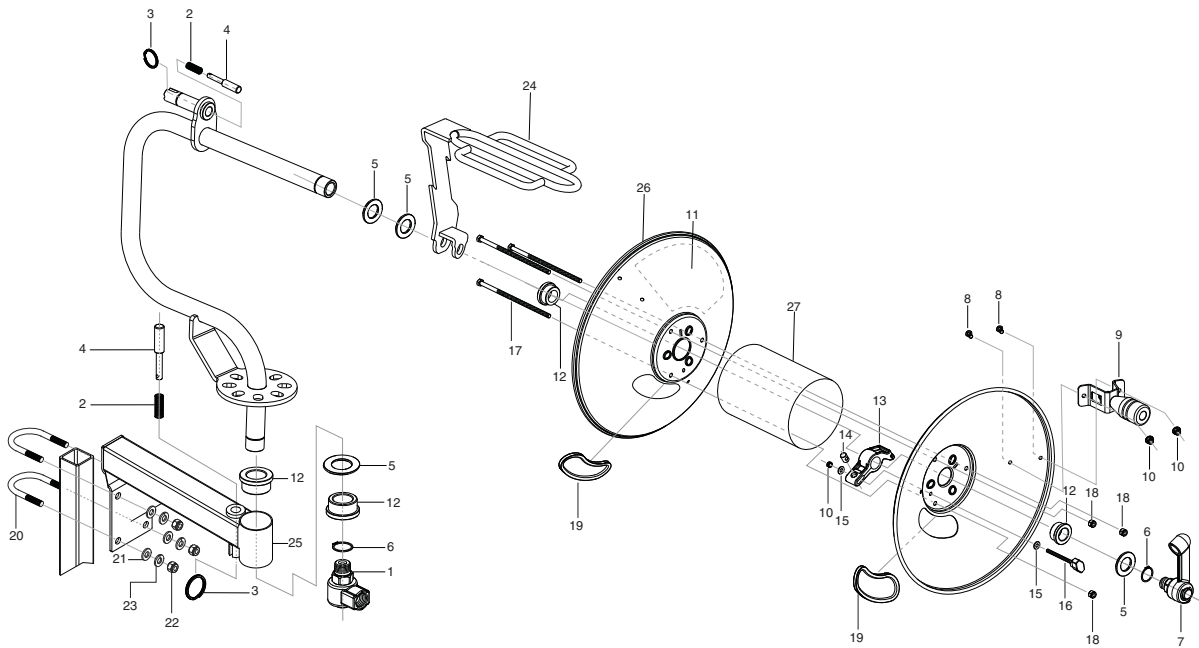


Legacy

Hose Reel Instructions

#8.750-485.0 100 Ft. Pivot Hose Reel • #8.750-482.0 200 Ft. Pivot Hose Reel



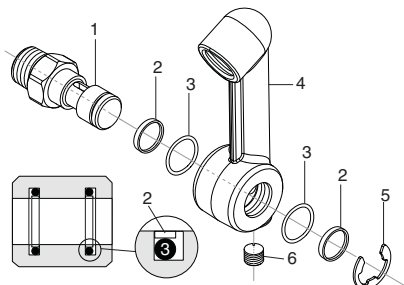
ITEM	PART NO.	DESCRIPTION	KIT	QTY	ITEM	PART NO.	DESCRIPTION	QTY
1	8.776-002.0	"T" Swivel Assembly, (see next page)		1	16	9.134-140.0	Tension Adjuster knob	1
2		Spring	A	2	17	9.196-056.0	Screw 5/16" x 6.0", Hex Head, Niquel Plated	3
3		Ring	A	2		9.196-060.0	Screw 5/16" x 8.0", Hex Head, Niquel Plated	3
4		Pin	A	2	18	9.197-002.0	Nylock Nut 5/16"	3
	9.139-374.0	Kit A - Lock Pin Spare Part Kit HR			19	8.706-577.0	Trim, Edge Guard, Black	2
5	9.198-017.0	Flat Washer 1.0 ID X 2.00 OD		4	20	8.750-701.0	U Bolt 5/16" x 1 3/4"	2
6	9.182-005.0	Retaining Ring 1.0 Shaft		2	21	8.718-980.0	Washer, 5/16", Flat	4
7	8.776-010.0	Extended Swivel Assembly, (see next page)		1	22	9.197-002.0	5/16-18 Nut Nylon Insert	4
8	9.196-059.0	Button Head Screw, SS 1/4"-20x1/2"		2	23	9.802-813.0	Washer, 5/16" Split Ring Lock, Zinc	4
9	9.121-043.0	Handle Assembly		1	24	9.116-010.0	Hose Guide 100 ft	1
10	9.197-010.0	Nylock Flange Nut 1/4"-20		3		9.116-016.0	Hose Guide 200 ft	1
11	9.138-435.0	Legacy Branding Label		1	25	9.113-025.0	Pivoting Arm	1
12	9.134-138.0	Plastic Bushing 1.0 ID		4	26	9.116-013.0	Plate 100 ft	2
13	9.134-139.0	Plastic Tension Adjuster		1		9.116-019.0	Plate 200 ft	2
14	9.152-021.0	Threaded Barrel		1	27	9.116-011.0	Drum 100 ft	1
15	9.802-802.0	Washer Flat 1/4"		2		9.116-017.0	Drum 200 ft	1

To locate your local Legacy Commercial Pressure Washer Hose Reel dealer nearest you,
visit: www.Spraymart.com

8.780-006.0

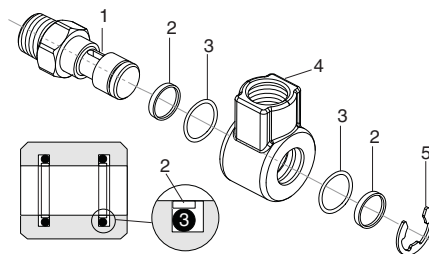
SWIVELS ASSEMBLY EXPLODED VIEW & PART LIST

EXTENDED SWIVEL



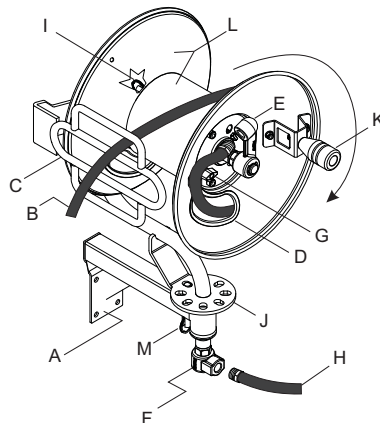
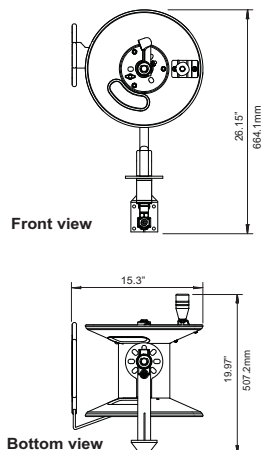
ITEM	PART NO.	DESCRIPTION	KIT	QTY
1		Swivel Shaft Male 1/2" NPT	C	1
2		PTFE SEAL	B,C	2
3		O`Ring A-019	B,C	2
4		Extended Swivel Machined	C	1
5		"E" Clip Retaining Ring	B,C	1
6		Plug 1/8" Countersunk	C	1
8.776-001.0		Kit B-Swivel Repair Kit		
8.776-010.0		Kit C-Swivel Complete Replacement Kit		

"T" SWIVEL



ITEM	PARTNO.	DESCRIPTION	KIT	QTY
1		Swivel Shaft Male 1/2" NPT	D	1
2		PTFE SEAL	B,D	2
3		O`Ring A-019	B,D	2
4		"T" Swivel machined	D	1
5		"E" Clip retaining ring	B,D	1
8.776-001.0		Kit B-Swivel Repair Kit		
8.776-002.0		Kit D-Swivel Complete Replacement Kit		

COMPONENT IDENTIFICATION AND INSTRUCTIONS



- A. Pivoting Arm
- B. High Pressure Hose
- C. Hose Guide
- D. Pass Hole
- E. Swivel
- F. "T" Swivel
- G. Tension Knob
- H. Water Supply Hose
- I. Lock Pin For Reel
- J. Rotary Base
- K. Handle
- L. Reel
- M. Lock Pin for Rotary Base

INSTALLATION INSTRUCTION MOUNTING

1. Check reel for shipping damage. Check operation turning reel by hand. Verify hose reel comes complete.
2. Position pivoting arm (A) to mount on a wall or pipe bracket accessory.

CONNECTING HOSES

WARNING: Before operation make sure that pressure system does not exceed maximum working pressure rating of reel.

NOTE: Pipe thread sealant is required to be applied on all threads.

1. Connect water supply hose (H) to "T" Swivel (F).
2. Route output hose (B) through hose guide (C) and pass hole (D).
3. Thread output hose (B) to swivel (E) Tighten securely.

4. Extend hose and wind onto reel (L) turning the handle (K) with the lock pin (I) unlocked, lock reel (L) when not used.
5. Turn rotary base (J) and use lock pin (M) to fix position.

ADJUSTMENTS REEL TENSION

Adjust reel tension by tightening or loosening plastic knob (G).

SERVICE INSTRUCTIONS

For hose reel maintenance and to prevent personal injury and/or equipment damage and avoiding the warranty, please refer only to an authorized service distributor.

REPLACING HOSES

1. To replace hoses follow procedures given under "Connecting Hoses".